

Féidearthachtaí as Cuimse
Infinite Possibilities

Inclusion4EU Co-design workshop



Inclusion
4EU

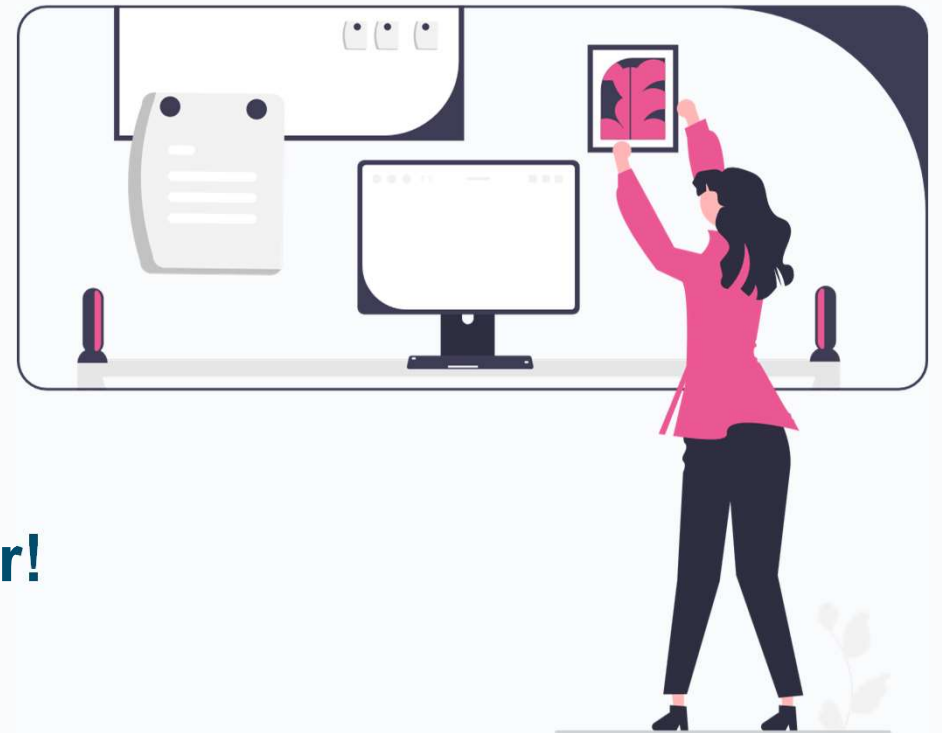


What is co-design?

Co-design is a participatory approach to designing solutions where all users are involved directly in the design process.

In co-design, you are the designer!

Introduce the concept – not replace



**Let's try some
co-design together!**

Step 1

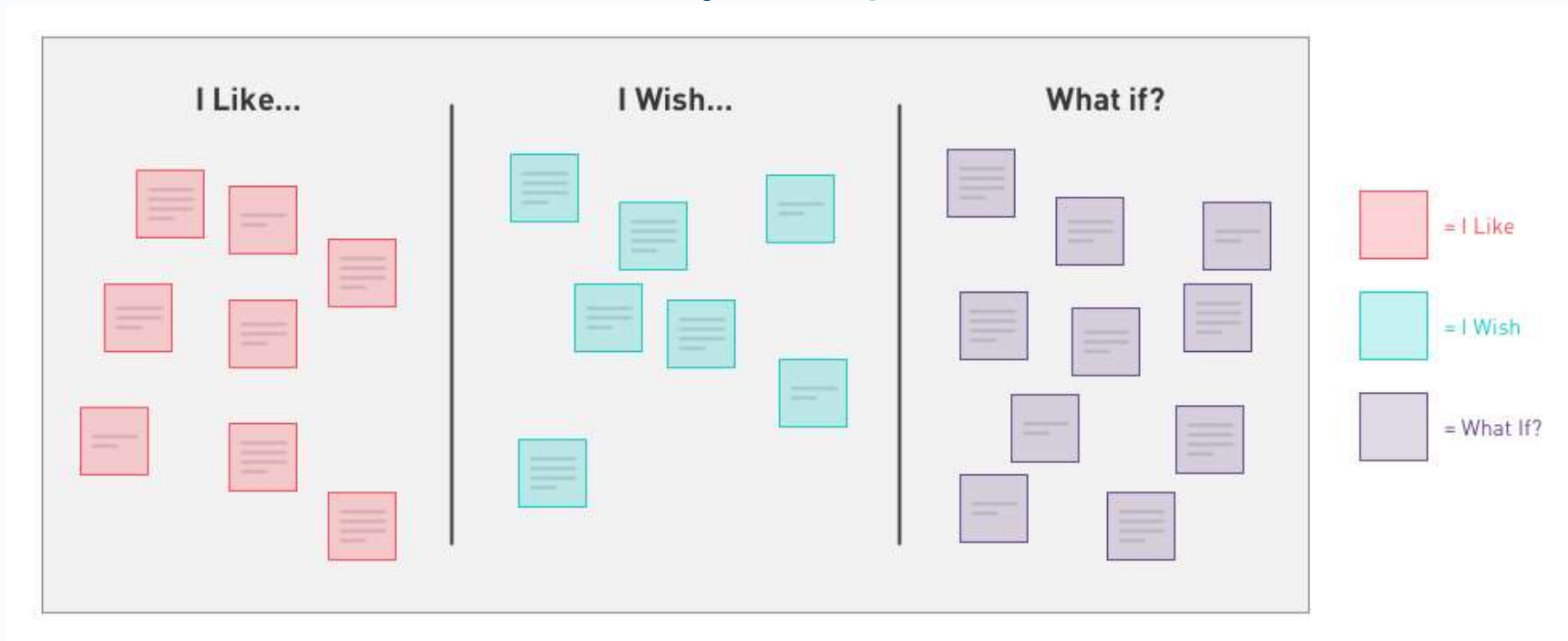
5 minutes to explore

Try to use the devices as you would usually do! (Or as you think they work)

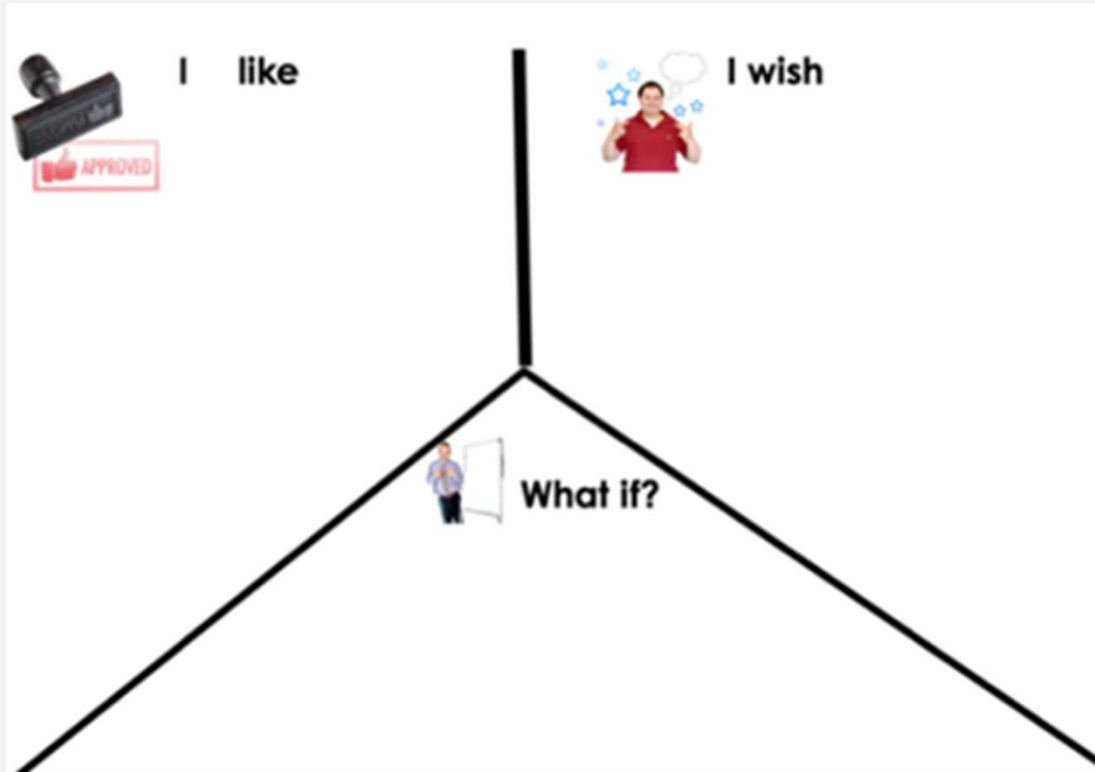


Step 2

20 minutes to write down your opinions about it



Visual Version



Step 3

Nominate one member of your group to share the findings with the rest of the teams

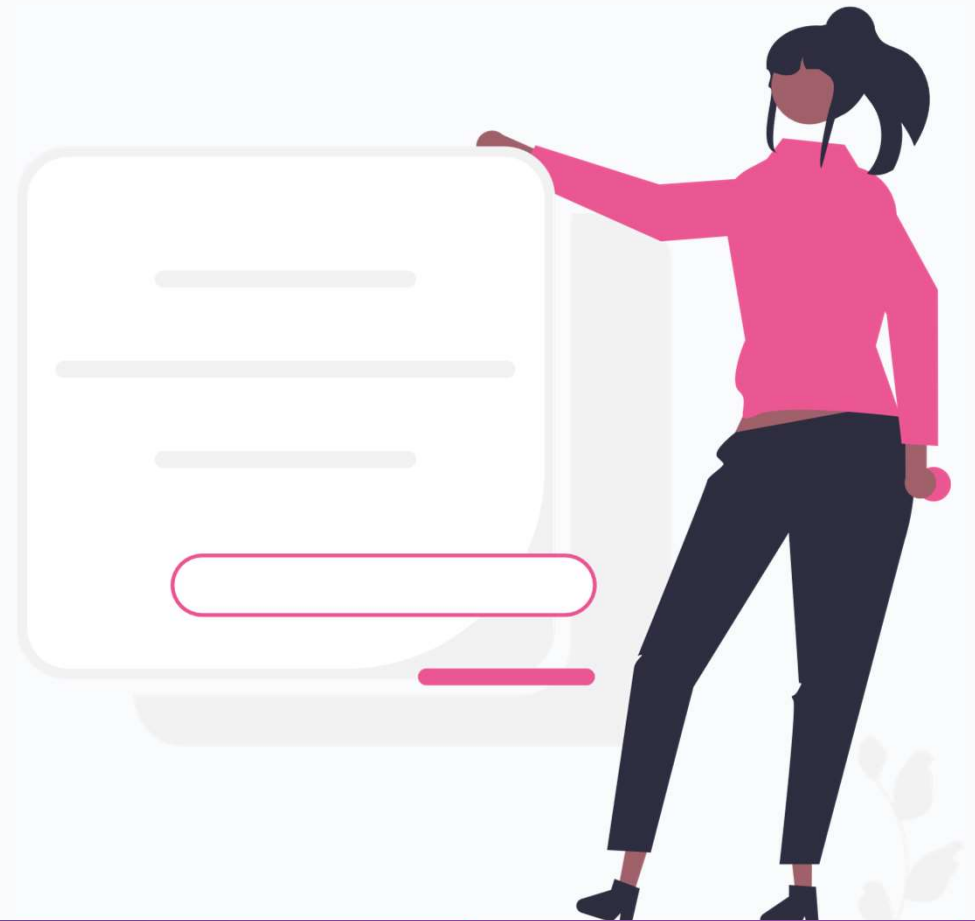


Discussion

Give us feedback on the process

Before you leave...

Paste your sheet of paper on the
wall



Thank you!

Claudia.rivera@tudublin.ie

Dympna.osullivan@tudublin.ie

<https://ascnet.ie/projects/access2cs/>

<https://ascnet.ie/projects/inclusion4eu/>



Inclusion
4EU